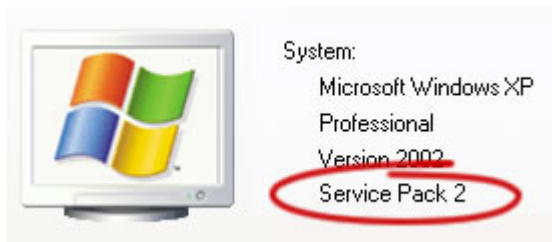




FREIE UNIVERSITÄT BOZEN
LIBERA UNIVERSITÀ DI BOLZANO
FREE UNIVERSITY OF BOZEN - BOLZANO

Wireless LAN – Installation Windows XP

First make sure that your hardware is compatible and that the operating system is installed with the **actual service packs and patches**.



If necessary, install your WLAN card (please follow the advices of our supplier) and **update the driver**.

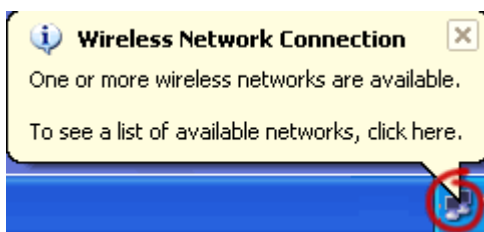
Please note that the configuration options are only visible when you are in range of an Access Point.

There are few steps more to complete before entering the scientific network.

Step 1/12

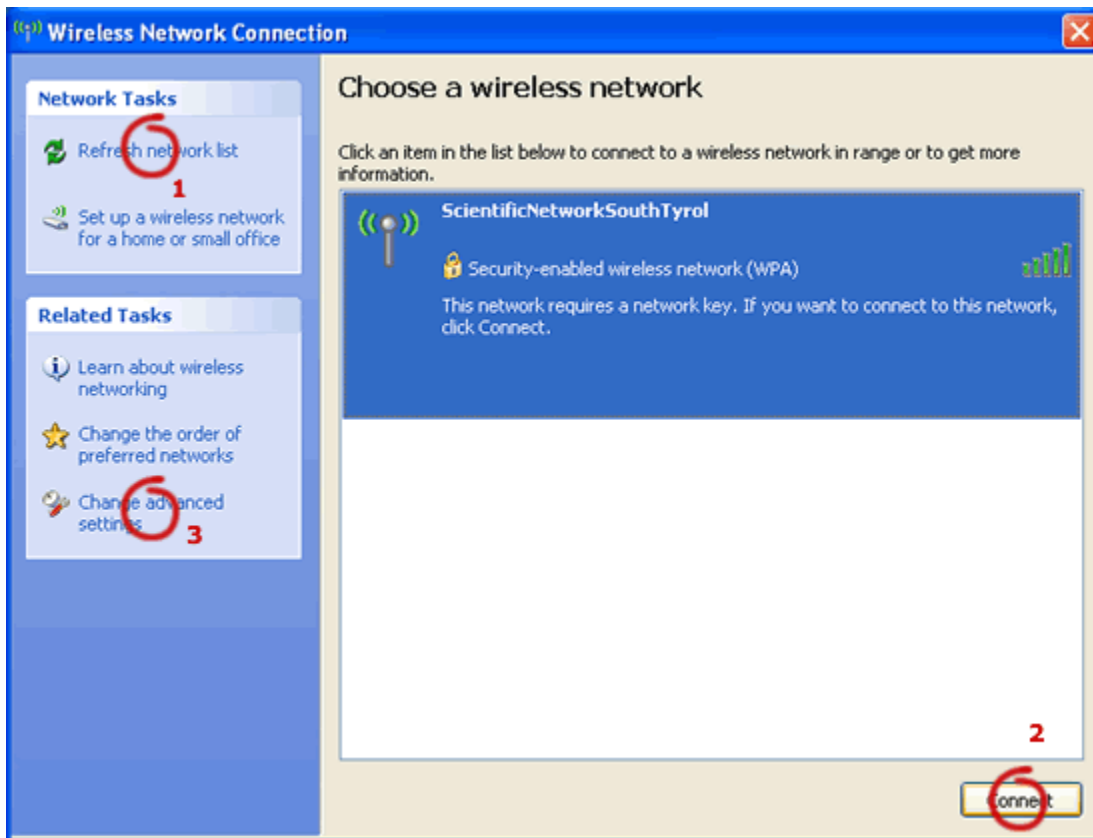
In order to activate wireless you oft must press a button on the notebook.

Clicking on the tooltip the following image appears. If the tooltips are not activated, click with your right mouse button on the icon of the WLAN card in the taskbar below.



Step 2/12

To make the wireless network "ScientificNetworkSouthTyrol" visible on the right side click on "Refresh network list".



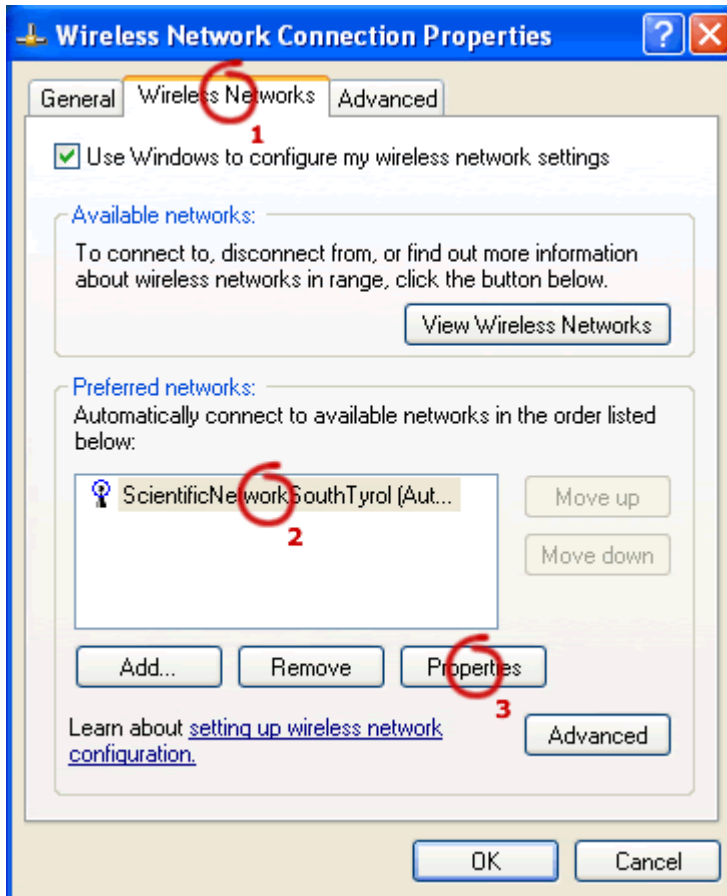
Click on "Connect" to establish the connection to the wireless LAN. If there appears an error message it can be ignored:



When the connection process is completed click on "Change advanced settings".

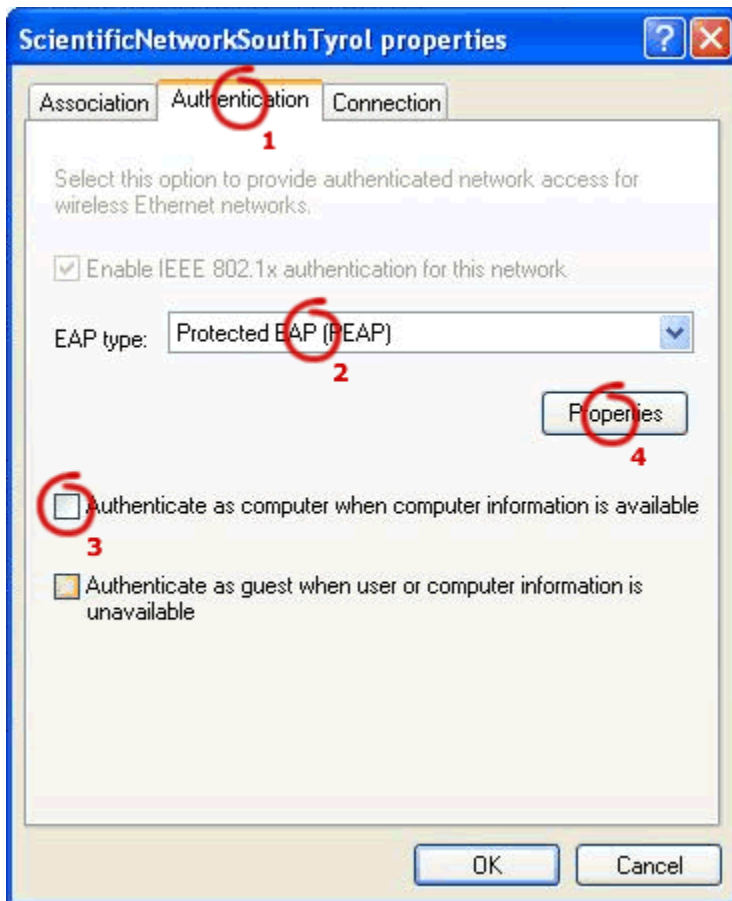
Step 3/12

Click on "Wireless Networks", mark "ScientificNetworkSouthTyrol" and then click on "Properties".



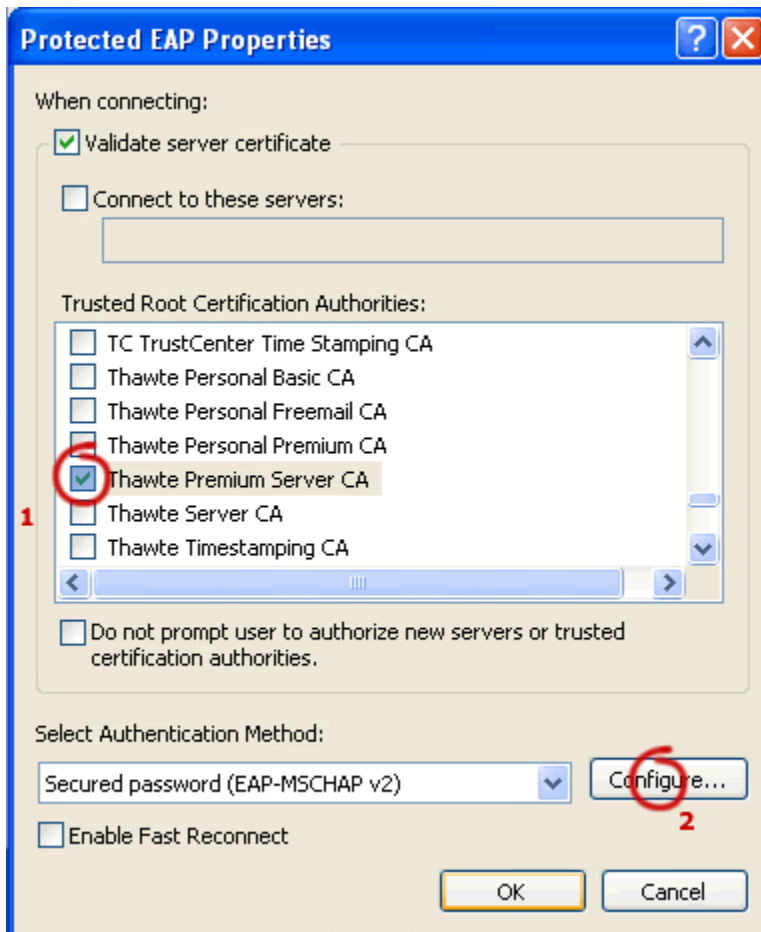
Step 4/12

Click on "Authentication". Choose "Protected EAP" as EAP Type and deactivate "Authenticate as computer when computer information is available". Click on "Properties" afterwards.



Step 5/12

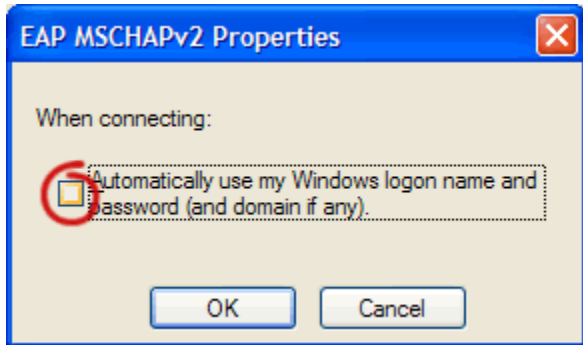
Choose "Thawte Premium Server CA" from the list of the trusted root certification authorities and click on "Configure".



Step 6/12

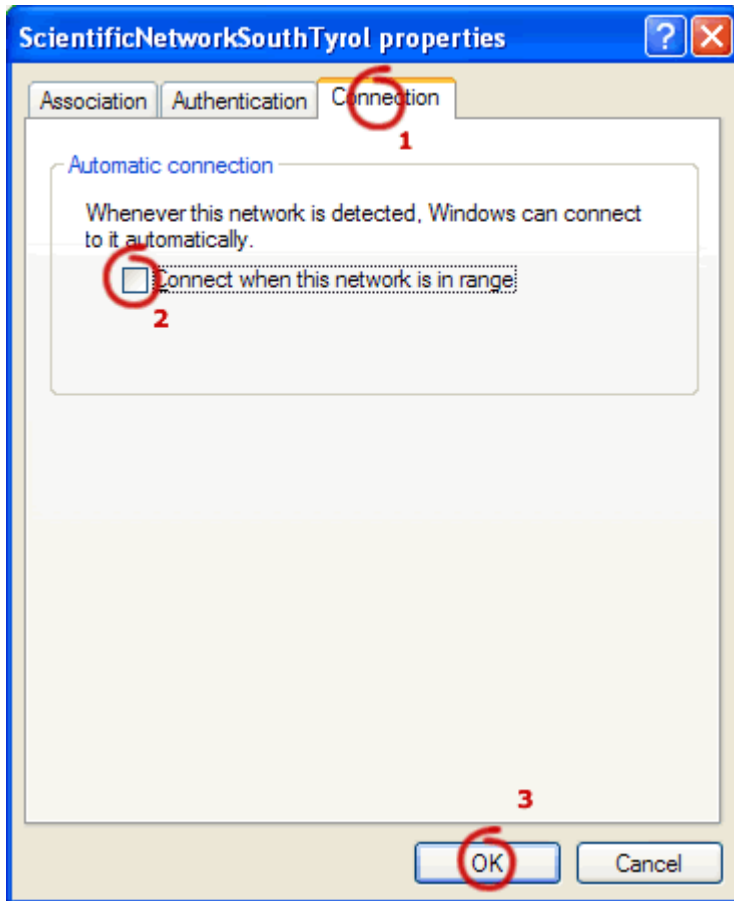
Deactivate the option "Automatically use my Windows logon name and password (and domain if any)."

Click on OK twice until you come to the window "ScientificNetworkSouthTyrol properties" again.



Step 7/12

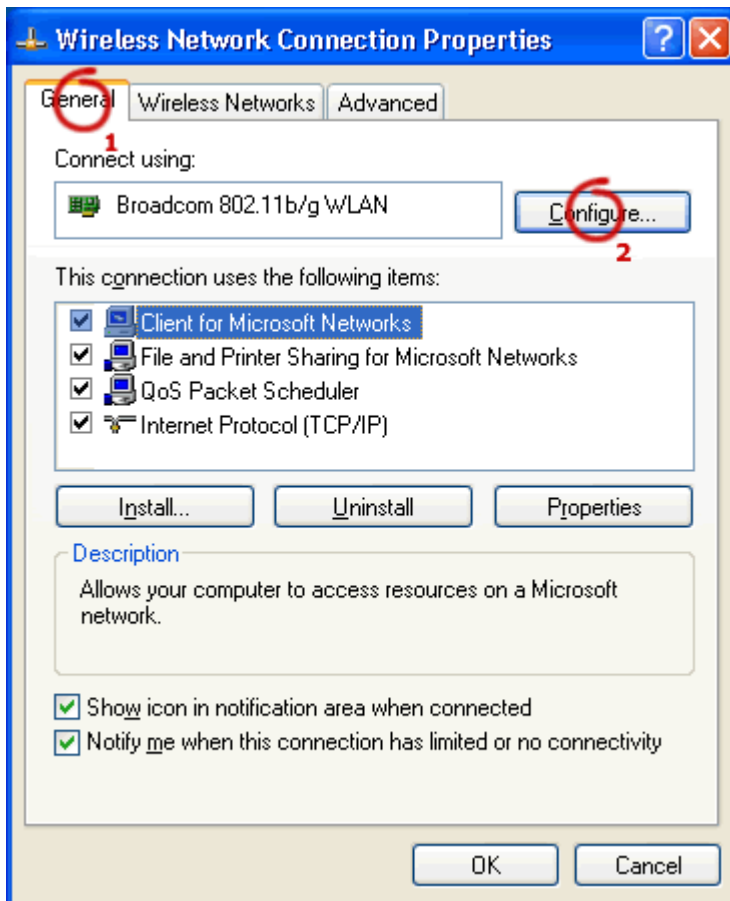
Go to the "Connection" tab and deactivate "Connect when this network is in range".



Click on OK.

Step 8/12

We recommend to deactivate the power save modus for the wireless LAN adapter. To do this go to the "General" tab and click on "Configure" ...



Go on the "Advanced" tab.

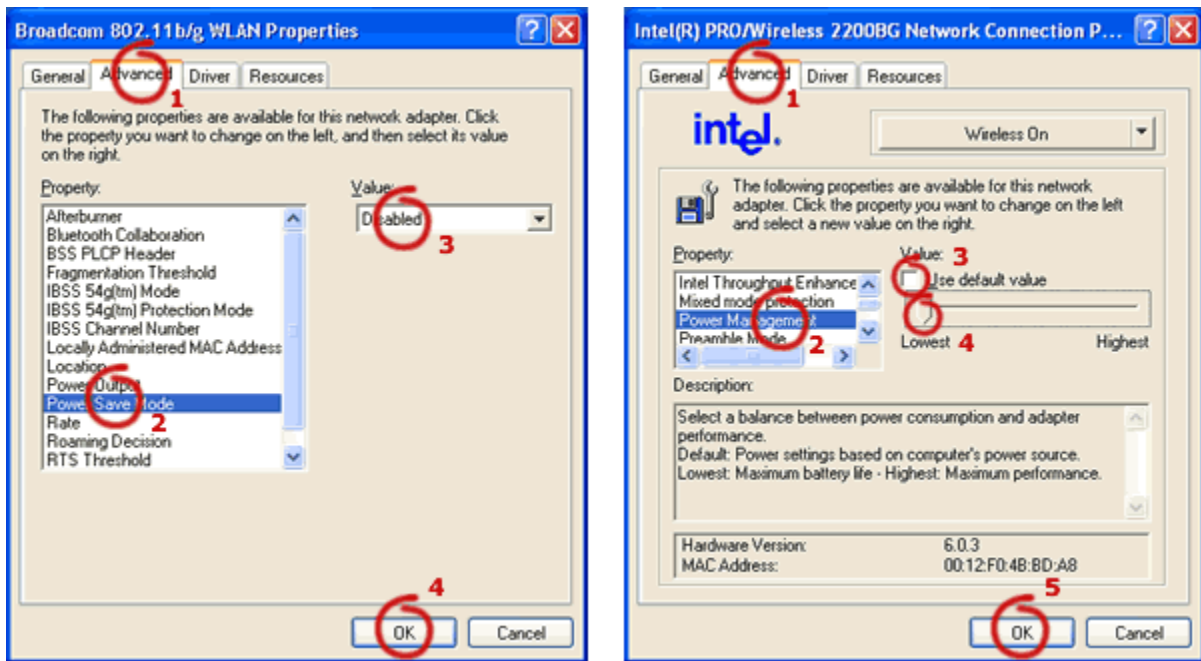
Notice: Dependent on the used wireless card and driver there can appear different setting possibilities and appearances.

Example 1: WLAN-Card Broadcom

Choose the property "Power Save Mode" in the list and set the value "Disabled".

Example 2: WLAN-Card Intel

Choose the property "Power Management" in the list, deactivate "Use default value" and set "Lowest".

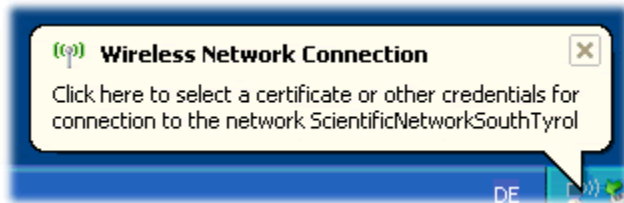


The configuration is complete.

IMPORTANT: All windows have to be closed with "OK" otherwise the configuration will not be saved.

Step 9/12

If the configuration is correct you can execute a "Connect" from the icon of the WLAN network card in the taskbar below, or you can click on the tooltips if they are activated. The login window appears.



Make sure that the login window is not hidden by another window.

Step 10/12

Enter your network account and password in the login window. You are connected to the network now and e. g. are able to surf in the internet.

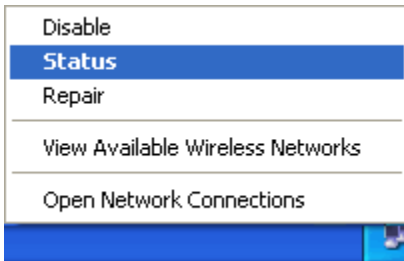
It is possible that your login data is asked more times. If in spite of repeated tries nothing happens restarting your computer may help.



How to access your own folder you can read in the [documentation](#).

Step 11/12

If you click with your right mouse button on the icon of the WLAN network card in the taskbar below the following image appears.



If you choose "Status" you can see the connection is active and you were assigned with a valid IP address.

Step 12/12

You can see your assigned IP address in "Support" under „Wireless Network Connection Status“.

