



FREIE UNIVERSITÄT BOZEN

LIBERA UNIVERSITÀ DI BOLZANO

FREE UNIVERSITY OF BOZEN · BOLZANO

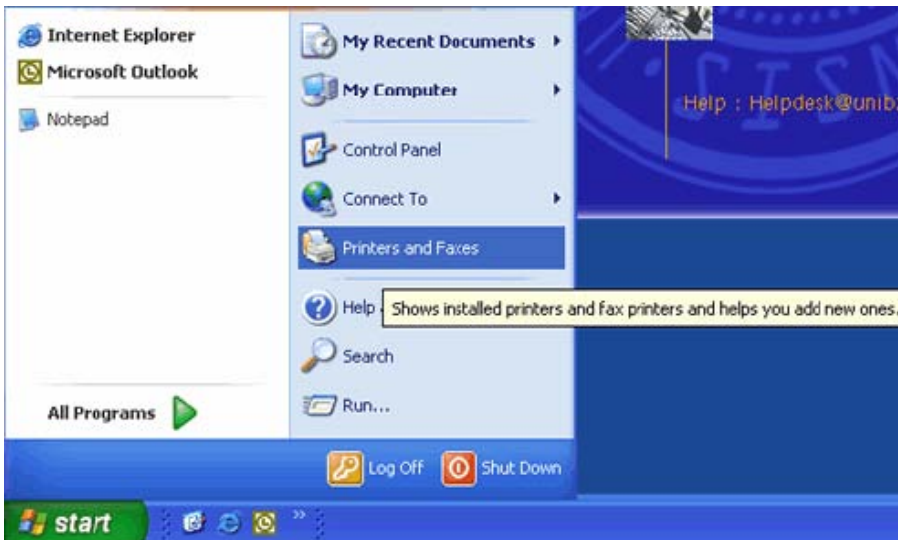


Wireless LAN – Set printers under Windows

Step 1/8

To set a printer please follow these steps:

Click first "Start" and then "Printers and Faxes".



Step 2/8

In the window "Printers and Faxes" click on "Add a printer".



Step 3/8

Click on "Next".



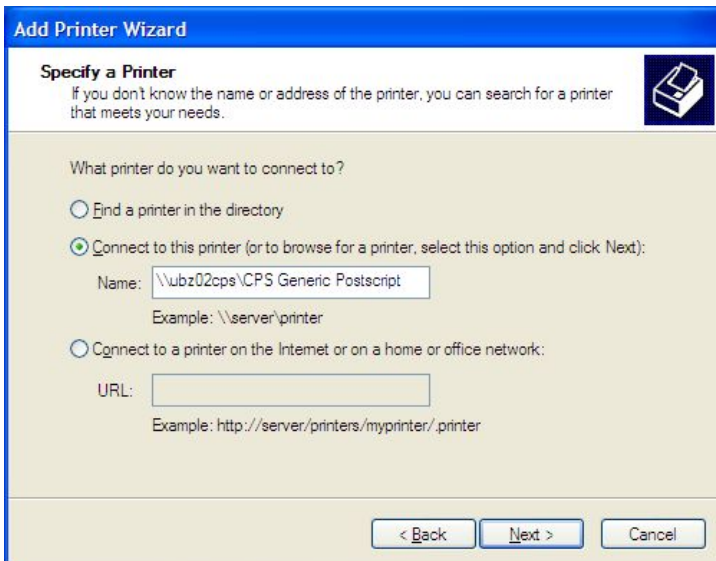
Step 4/8

Choose "A network printer..." and click on "Next".



Step 5/8

Choose "Connect to this printer..." and insert "\\ubz02cps\CPS Generic Postscript" in the field "Name" below.



Click on "Next".

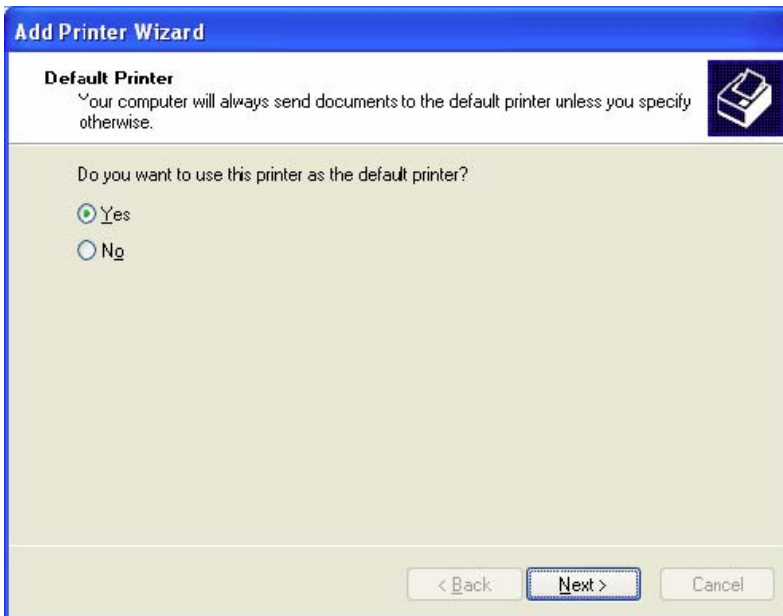
Step 6/8

A login window appears. Enter your **network account** and indicate also the **domain "unibz"** (for example "unibz\jsmith"). Click on "OK".



Step 7/8

Choose “Yes” in the window “Default printer” and click on “Next”.



Step 8/8

Click on “Finish”.

