



FREIE UNIVERSITÄT BOZEN

LIBERA UNIVERSITÀ DI BOLZANO

FREE UNIVERSITY OF BOZEN · BOLZANO



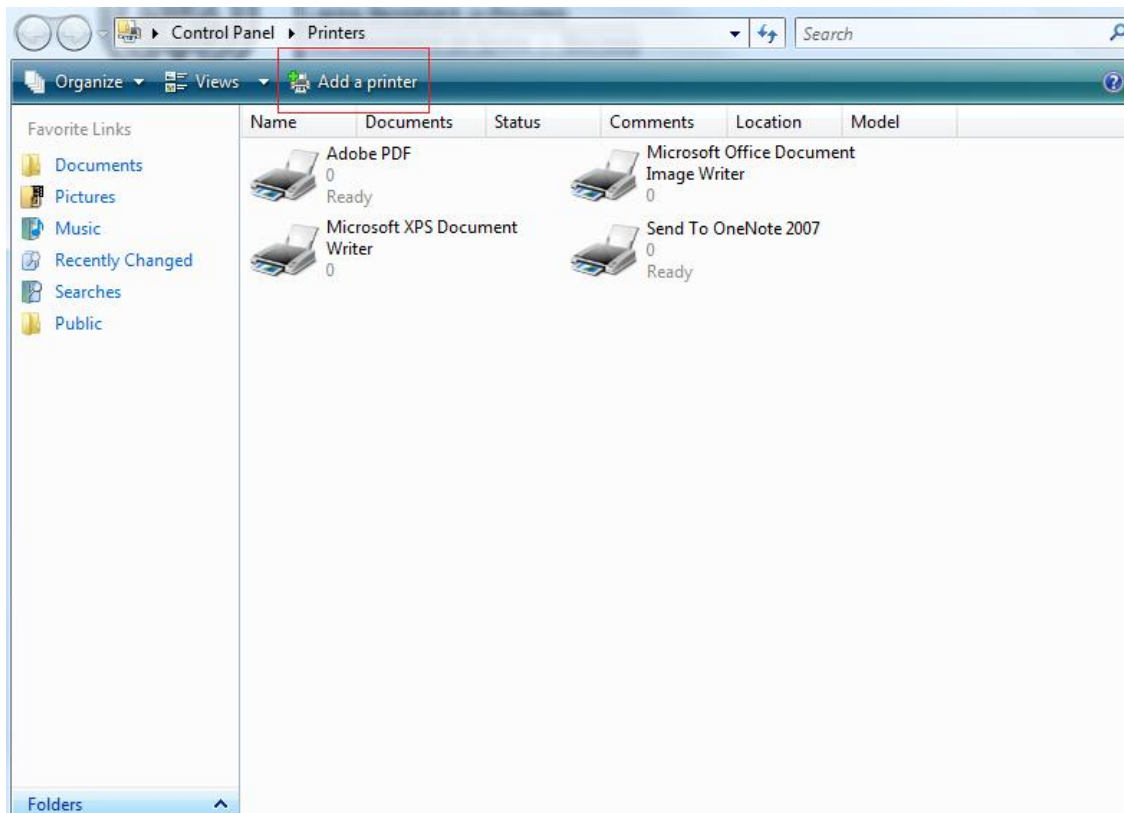
Wireless LAN – Set printers Windows Vista

Step 1/8

To set a printer please follow these steps:
Click first "Start" and then "Printers".

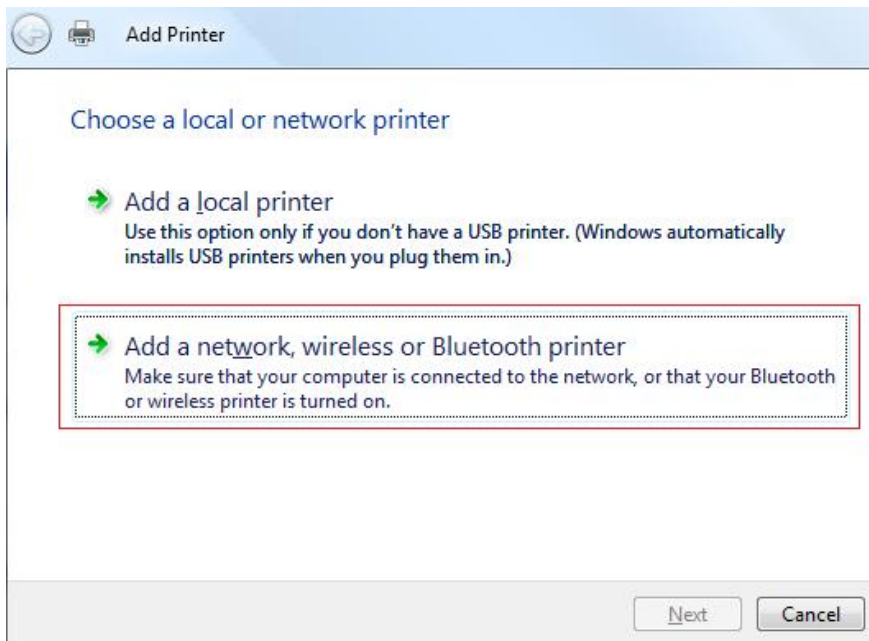
Step 2/8

In the following window click on "Add a printer".



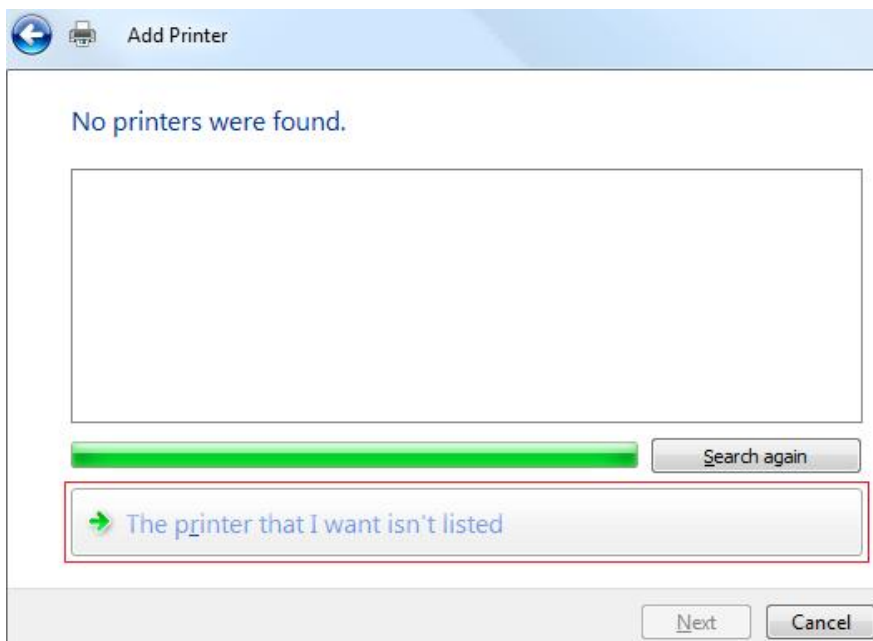
Step 3/8

Click on "Add a network, wireless or Bluetooth printer".



Step 4/8

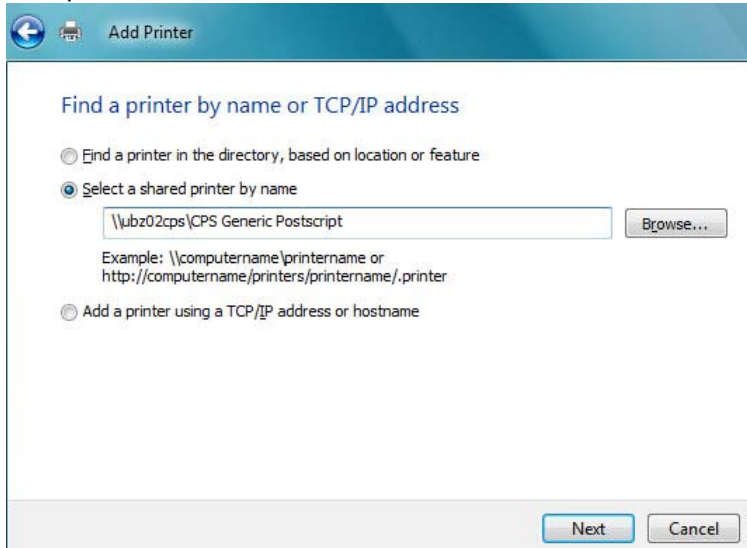
Click on the button "The printer that I want isn't listed"



Step 5/8

Choose "Select a shared printer by name" and insert the server "\\ubz02cps" and the name of the printer "CPS Generic Postscript" into the field "Name" below.

Example:



Click on "Next".

Step 6/8

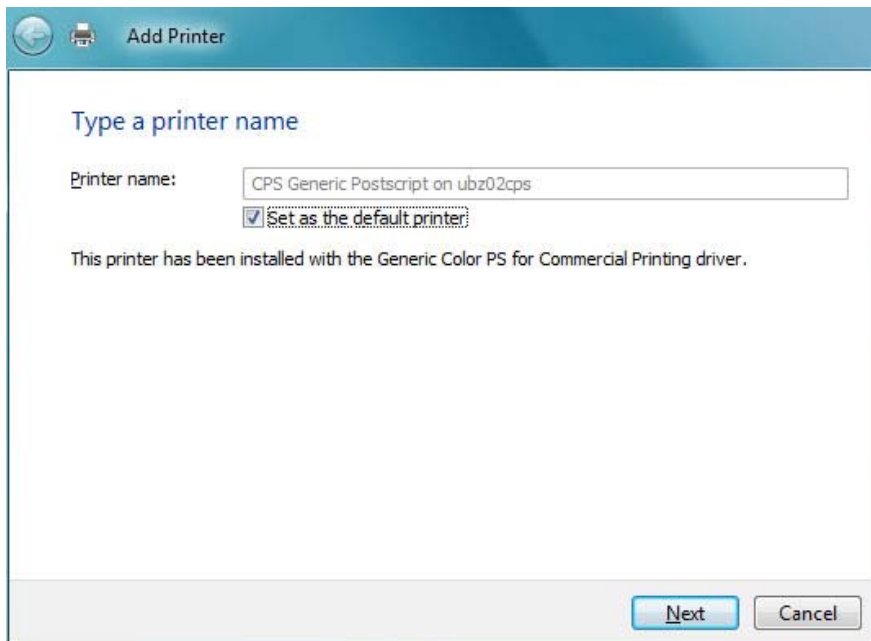
A login window appears.

Enter your network account and indicate also the domain "unibz" (z. B. "unibz\jsmith"). Click on "OK".



Step 7/8

Choose "Set as the default printer" and click on "Next".



Step 8/8

Finish the installation by clicking on "Finish".

