



FREIE UNIVERSITÄT BOZEN

LIBERA UNIVERSITÀ DI BOLZANO

FREE UNIVERSITY OF BOZEN · BOLZANO

## **Network access at student hostels (Windows XP)**

Attention: Windows XP Service Pack 3 users please follow the instructions at the end of this guide.



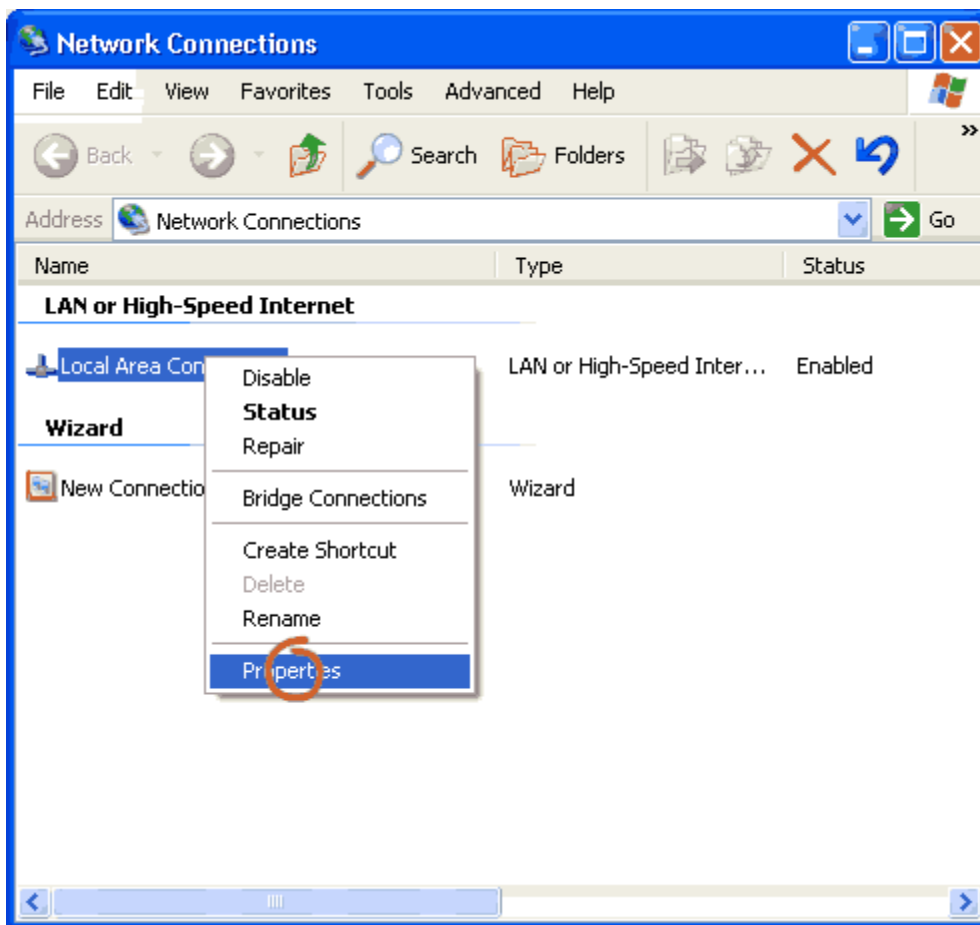
FREIE UNIVERSITÄT BOZEN  
LIBERA UNIVERSITÀ DI BOLZANO  
FREE UNIVERSITY OF BOZEN - BOLZANO

## Network access at student hostels (Windows)

### Step 1/9

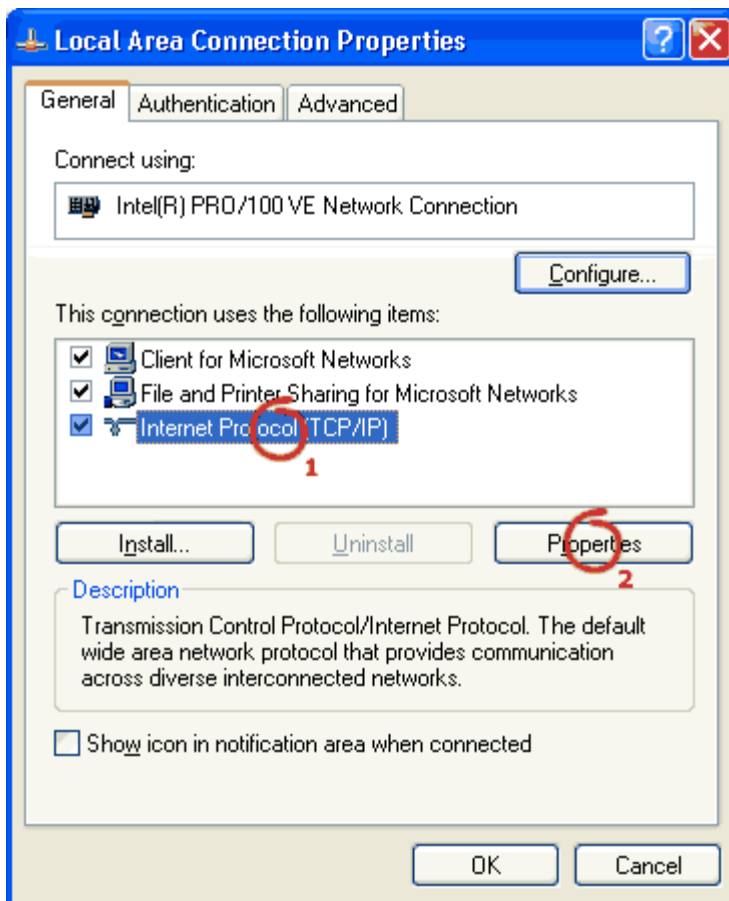
If you want to access to the network over data cable you must first configure the PC in this way:

Go to "Start/Control Panel" and click on "Network Connections". Right click on "Local Area Connection" and then click on "Properties".

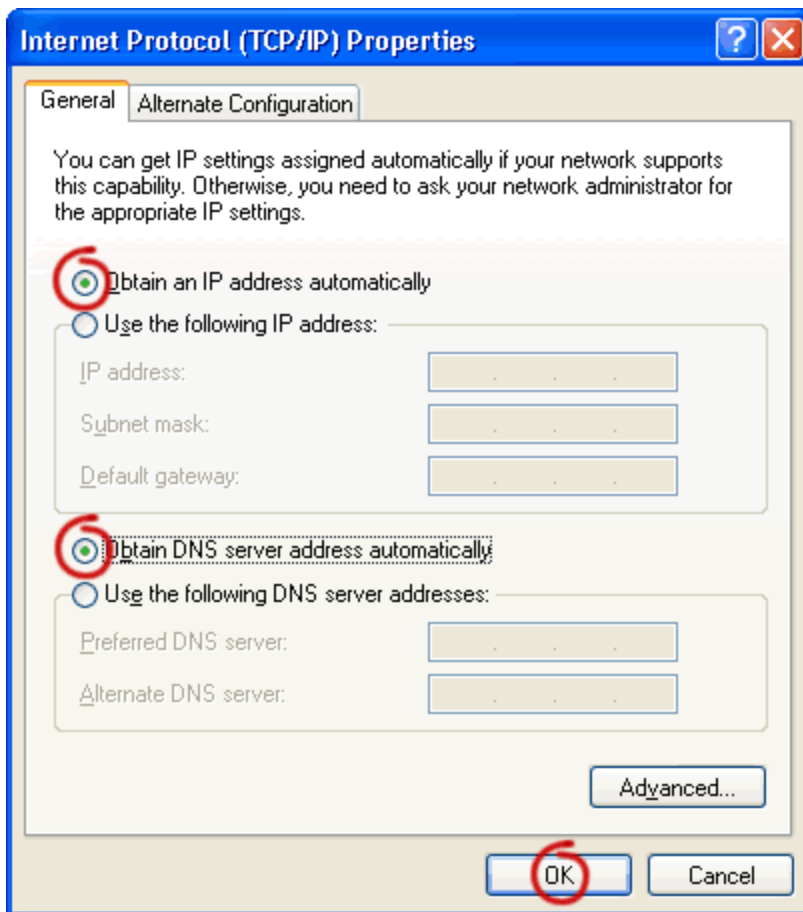


## Step 2/9

On the "General" tab choose "Internet Protocol (TCP/IP)" and click on "Properties".



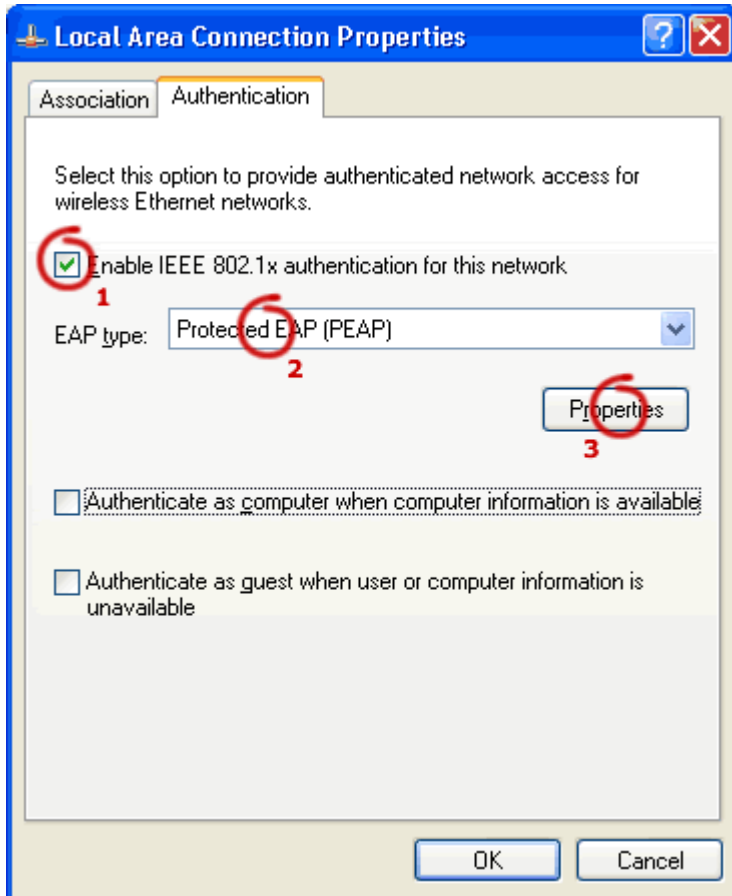
Make sure that the options "Obtain an IP address automatically" and "Obtain DNS server address automatically" are enabled.



Close the window by clicking on "OK" and change to the "Authentication" tab.

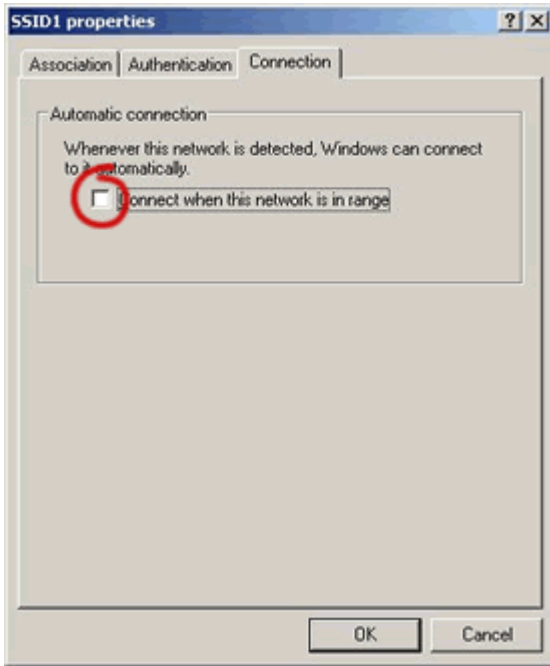
### Step 3/9

On the "Authentication" tab enable the following option: "Enable IEEE 802.1x authentication to the network". Choose "Protected EAP" as EAP Type.



Click on "Properties" afterwards.

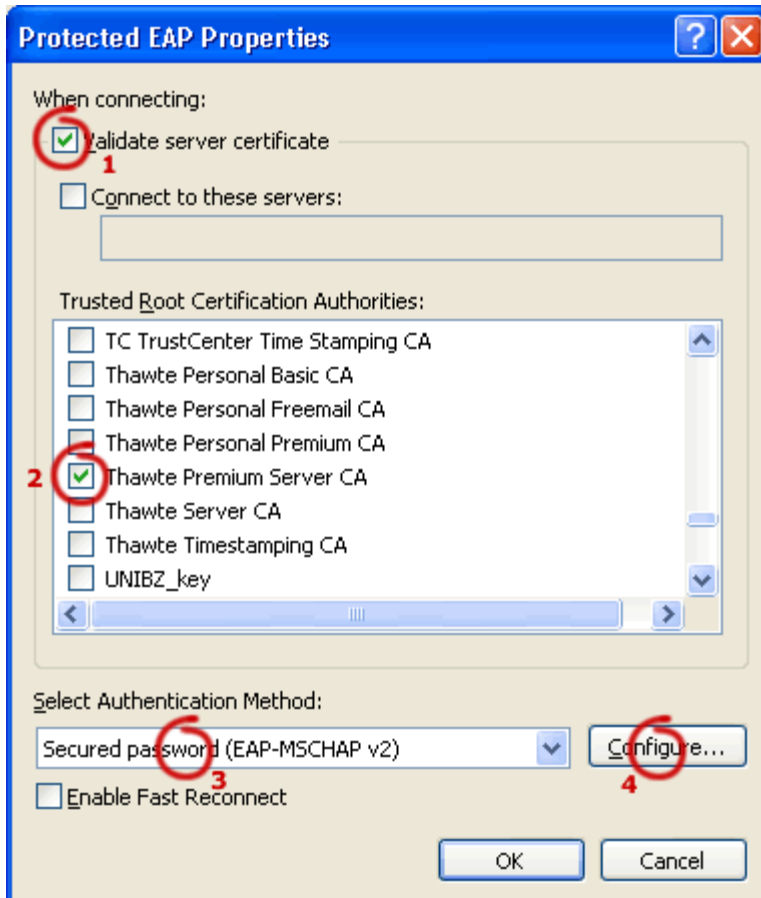
**REMARK:** If the tab "Connection" exists, please deactivate "Connect when this network is in range":



### Step 4/9

Under "Protected EAP Properties" activate "Validate Server certificate" and choose "Thawte Premium Server CA" from the list of the trusted root certification authorities.

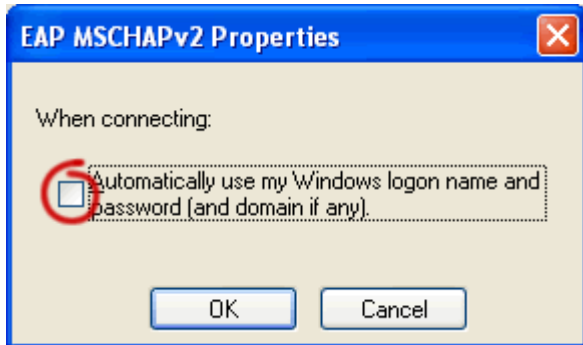
As "Authentication Method" choose "Secured Password (EAP-MSCHAP v2)".



Then click "Configure...".

### Step 5/9

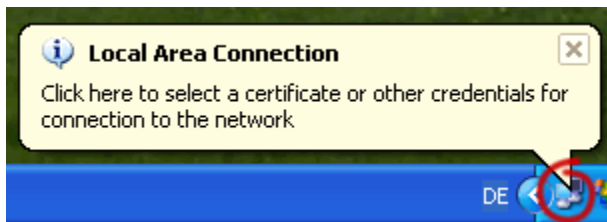
Under "EAP MSCHAPv2 Properties" deactivate the option "Automatically use my Windows logon name and password (and domain if any)".



You can close all windows now, the configuration is complete.

### Step 6/9

If the configuration is correct, you can execute a "Connect" from the icon of the network card in the taskbar below, or you can click on the tooltips if they are activated.



## Step 7/9

Enter your network account and password in the login window. You are connected to the network now and e.g. are able to surf in the internet.

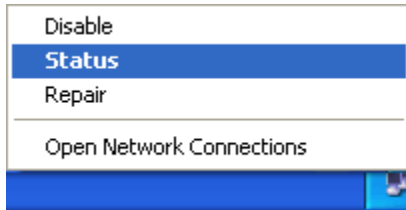
It is possible that your login data is asked for several times more. If in spite of repeated tries nothing happens restarting your computer may help.



How to access your own folder you can read in the [documentation](#).

### Step 8/9

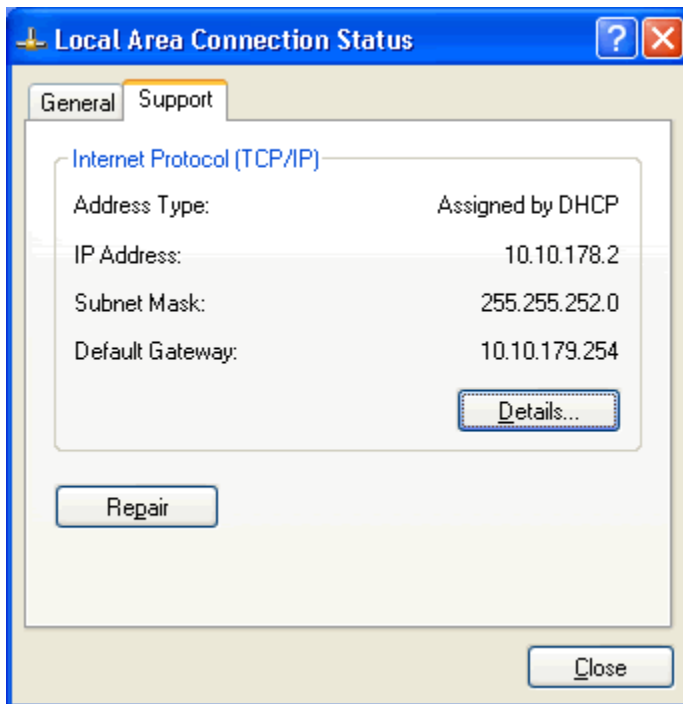
If you click with your right mouse button on the icon of the network card in the taskbar below the following image appears.



If you choose "Status" you can see the connection is active and you were assigned with a valid IP address.

### Step 9/9

You can see your assigned IP address in "Support" under "Local Area Network Connection Status".

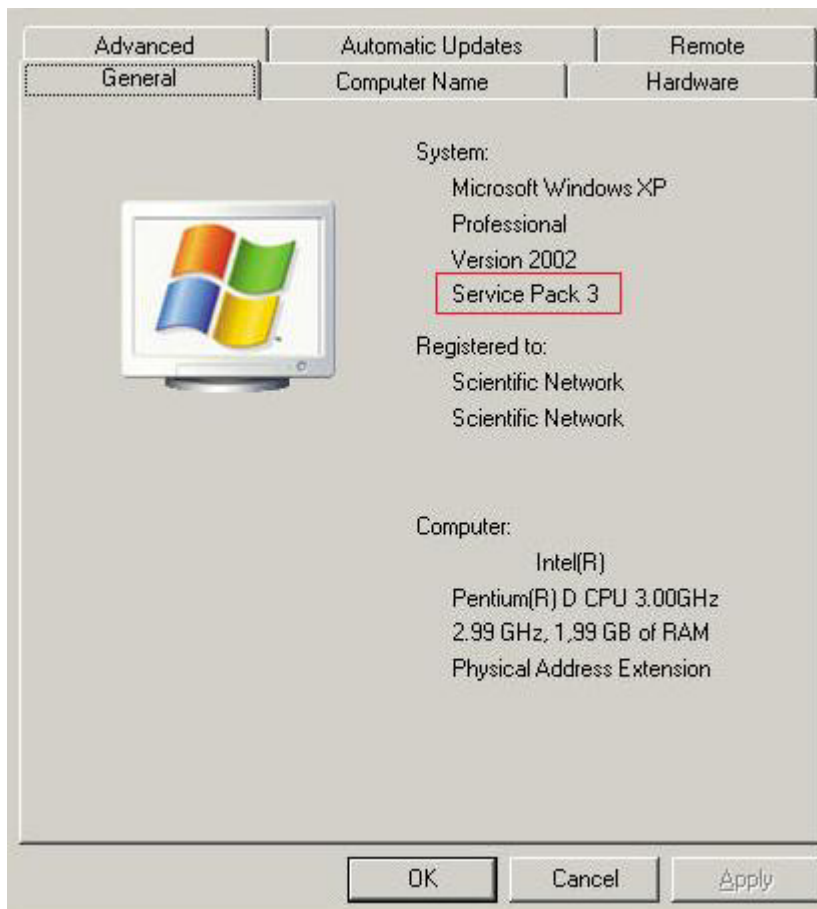


## FOR WINDOWS XP SERVICE PACK 3 USERS ONLY:

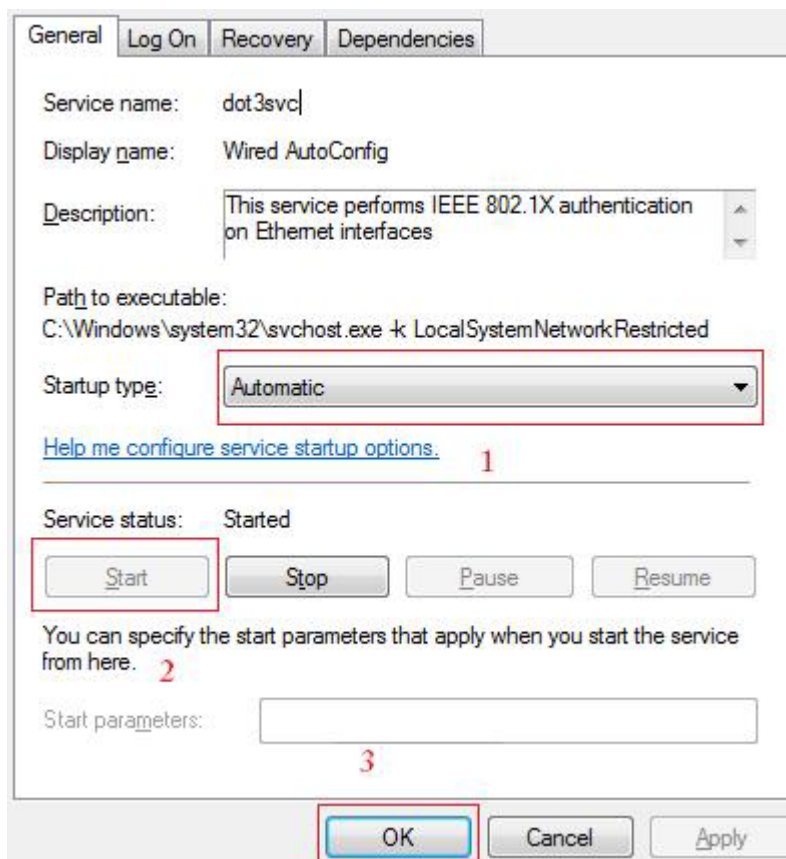
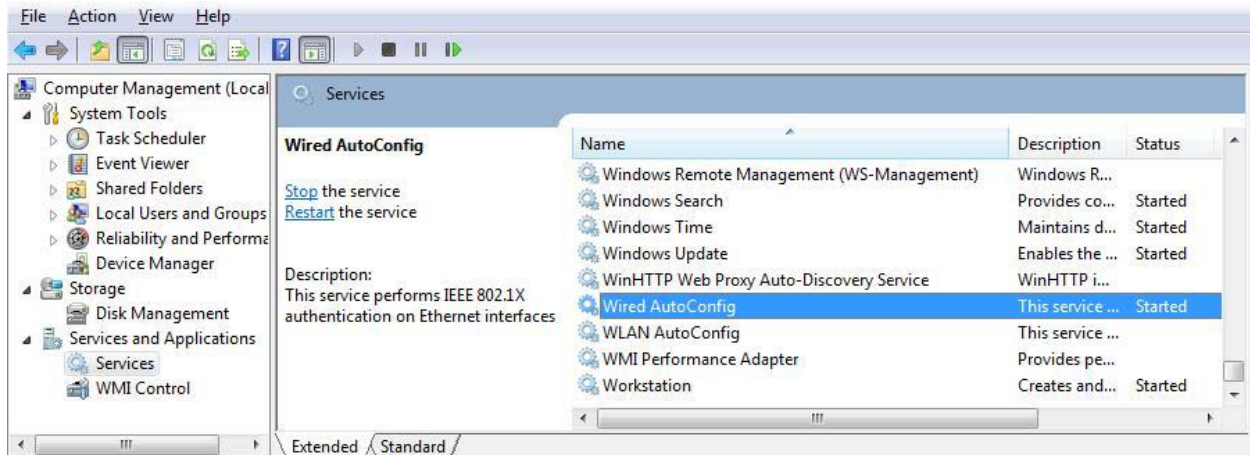
If you are not certain that you have Service Pack 3, you can check it this way:

Go to "Start/Control Panel/System".

Here you can see which Service Pack you have.



Go to "Start/Control Panel/Administrative Tools/" and click on "Computer Management". Open the menu "Services and Applications", click on "Services", then scroll down until you find the entry "Wired AutoConfig" and open it.



Set "Startup type" to "Automatic" and "Start" the Service (like on the picture) then confirm with "OK".