

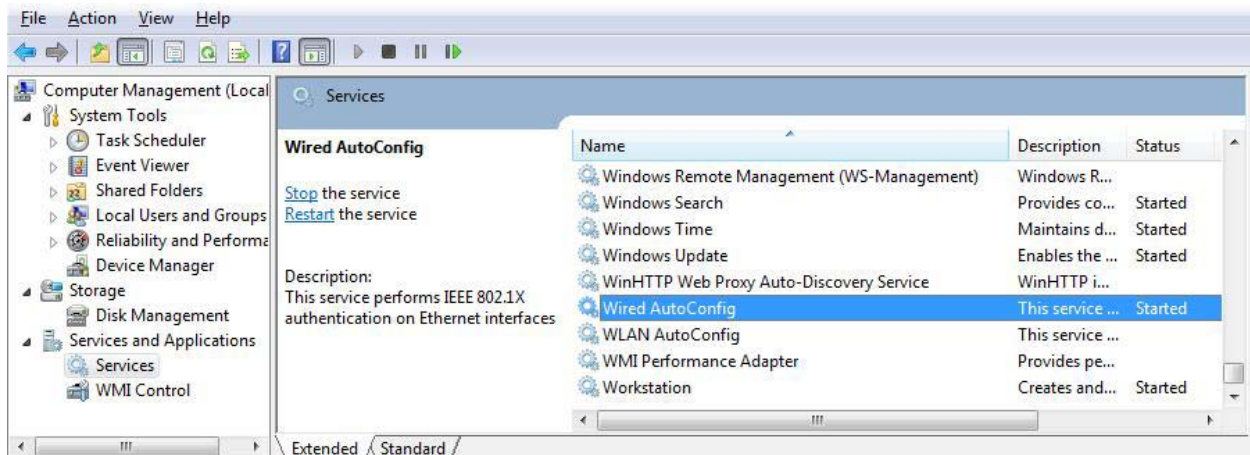


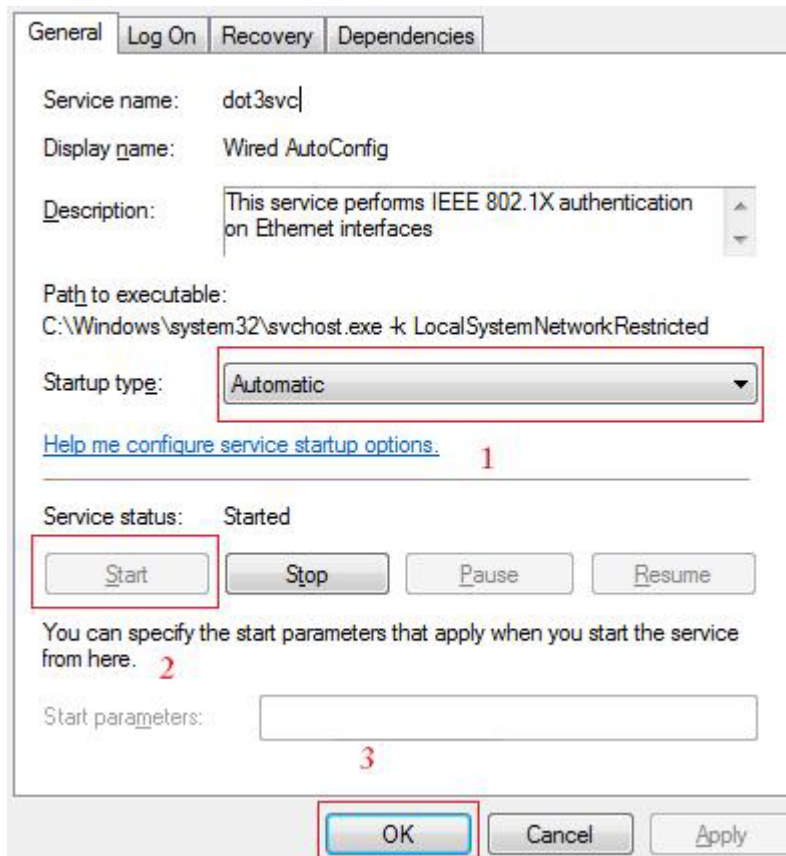
## Network access at student hostels (Windows Vista)

### Step 1/4

If you want to access to the network by using a data cable you must first configure the PC in this way:

Go to "Start/Control Panel/Administrative Tools/" and click on "Computer Management". Open the menu "Services and Applications", click on "Services", then scroll down until you find the entry "Wired AutoConfig" and open it.





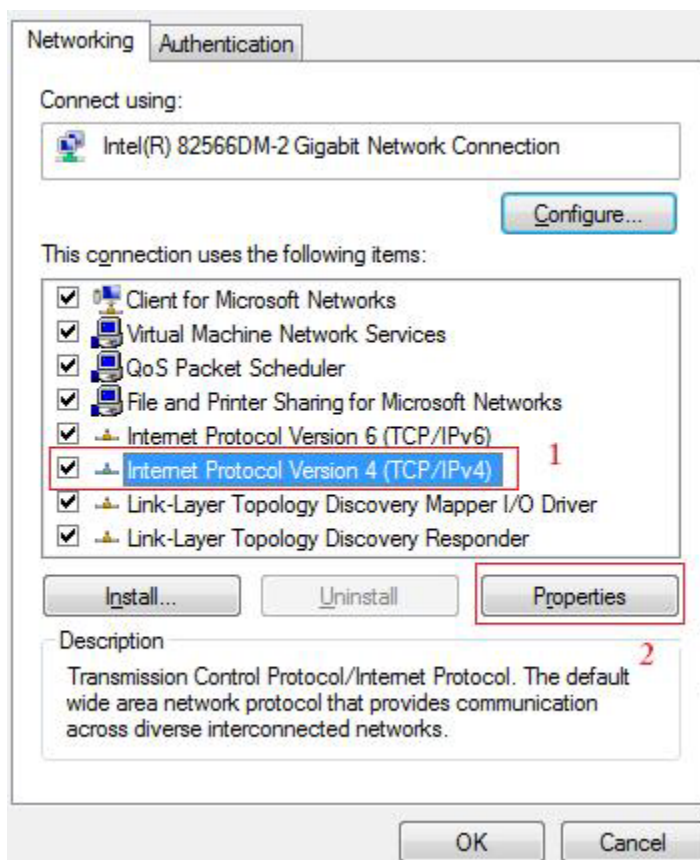
Set "Startup type" to "Automatic" and "Start" the Service (like on the picture) then confirm with "OK".

## Step 2/4

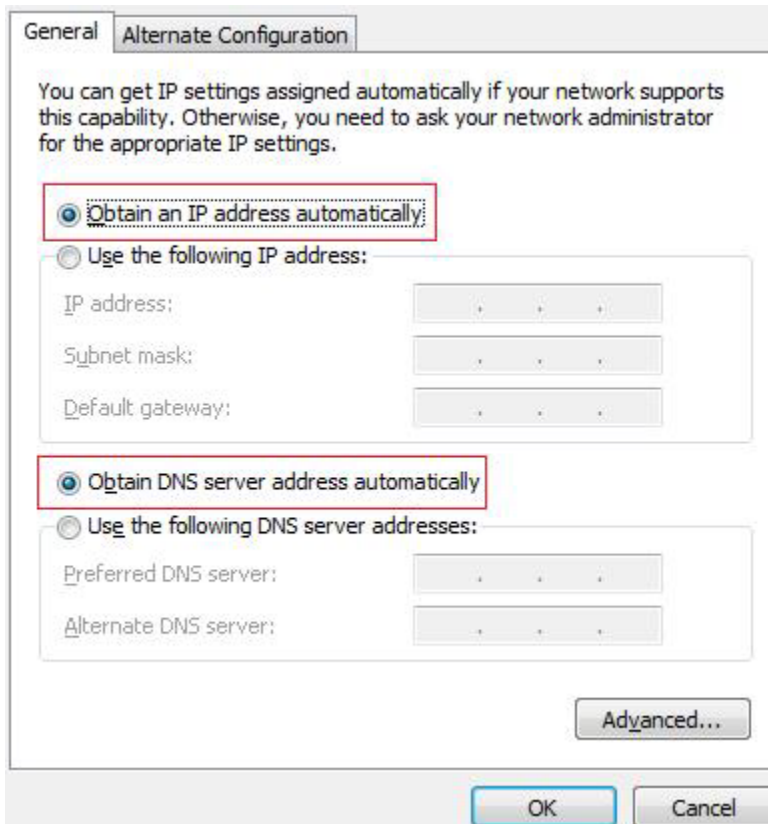
Go to "Start/Control Panel" and click on "Network and Sharing Center". Then click on the button "Manage network connections"

Right click on your "Local Area Connection" and select the "Properties".

Then click on "Internet Protocol Version 4 (TCP/IPv4)", then on "Properties".



The following window appears:



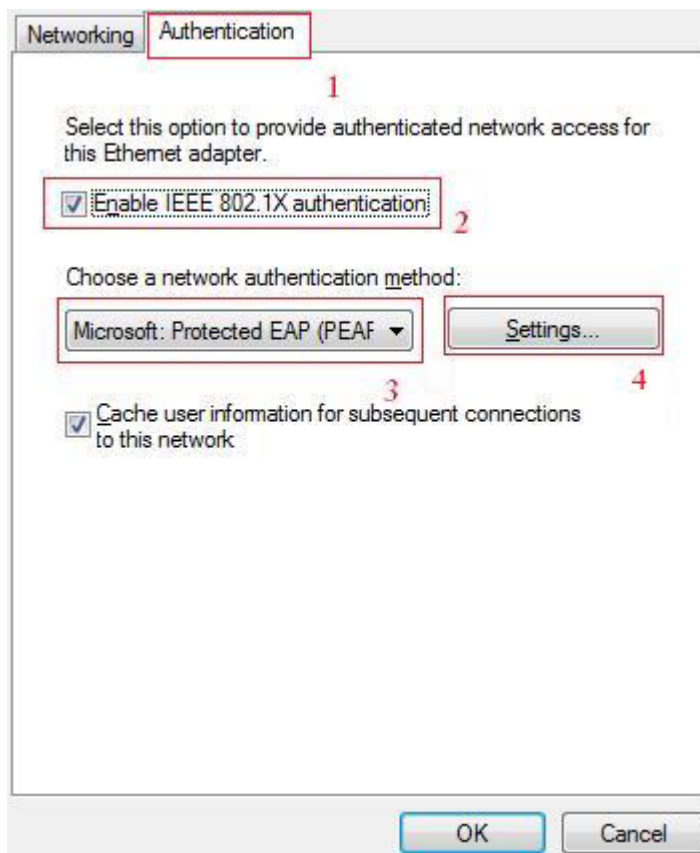
Choose your settings like the picture shows and confirm with "OK".

### Step 3/4

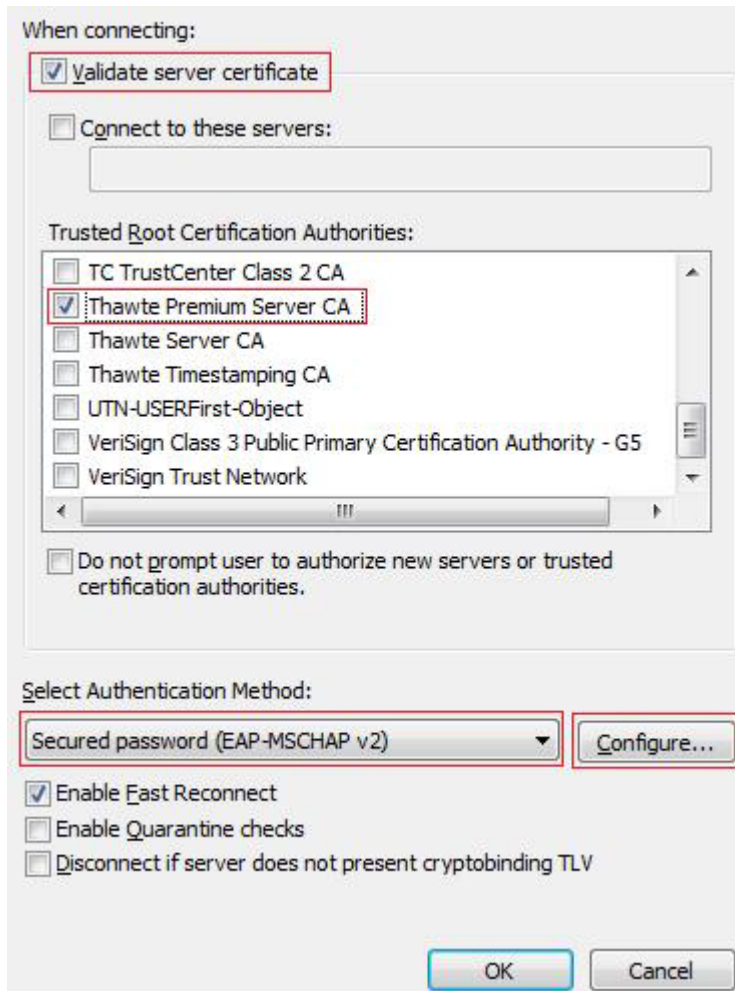
Go to "Start/Control Panel" and click on "Network and Sharing Center". Then click on the button "Manage network connections".

Right click on your "Local Area Connection" and select the "Properties".

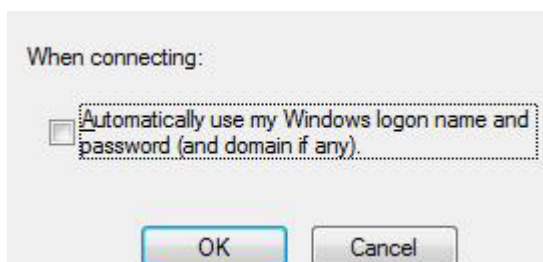
Click on the "Authentication" tab, select "Microsoft: Protected EAP Properties" and then click on "Settings"



Choose "Thawte Premium Server CA" from the list of the "Trusted Root Certification Authorities". As "Authentication Method" choose "Secured Password (EAP-MSCHAP v2)".



Then click "Configure..." and choose your settings like shown and confirm with "OK".



#### Step 4/4

Enter your network account and password in the login window. In the field “Logon domain” please write UNIBZ. You are connected to the network now and e.g. are able to surf in the internet.

It is possible that your login data is asked for several times. If in spite of repeated tries nothing happens restarting your computer may help.



The image shows a Windows logon dialog box. The header features a graphic of a globe and laptops. The dialog contains three input fields: "User name:" with the text "jsmith", "Password:" with a masked password represented by 12 dots, and "Logon domain:" with the text "UNIBZ". At the bottom of the dialog are two buttons: "OK" and "Cancel".